

MONITORING STUDIES

DOI: 10.15838/esc.2026.1.103.20

Public Opinion Monitoring of the State of the Russian Society

As in the previous issues, we publish the results of the monitoring of public opinion concerning the state of the Russian society. The monitoring is conducted by VoIRC RAS in the Vologda Region¹.

The following tables and graphs show the dynamics of several parameters of social well-being and socio-political sentiment of the region's population according to the results of the latest round of the monitoring (February 2026) and for the period from February 2025 to February 2026 (the last seven surveys, that is, a year of measurements).

We compare the results of the surveys with the average annual data for 2000 (the first year of Vladimir Putin's first presidential term), 2007 (the last year of Vladimir Putin's second presidential term, when the assessment of the President's work was the highest), 2012 (the first year of Vladimir Putin's third presidential term), 2018 (the first year of Vladimir Putin's fourth presidential term), 2023 (the last full year of the fourth presidential term).

The annual dynamics of the data are presented for 2007–2025².

In December 2025 – February 2026, the President's approval rating remained unchanged and amounted to 64–65%. The share of negative judgments was 20%.

Over the past 12 months (from February 2025 to February 2026), the share of positive assessments of the activities of the head of state has decreased from 66 to 64%. The proportion of negative judgments remained unchanged.

¹ The surveys are held six times a year in the cities of Vologda and Cherepovets, in Babayevsky, Velikoustyugsky, Vozhegodsky, Gryazovetsky, Tarnogsky Kirillovsky, Nikolsky municipal okrugs, and in Sheksninsky Municipal District. The method of the survey is a questionnaire poll by place of residence of respondents. The volume of a sample population is 1,500 people 18 years of age and older. The sample is purposeful and quoted. The representativeness of the sample is ensured by the observance of the proportions between the urban and rural population, the proportions between the inhabitants of settlements of various types (rural communities, small and medium-sized cities), age and sex structure of the Region's adult population. Sampling error does not exceed 3%.

More information on the results of VoIRC RAS surveys is available at <http://www.vsc.ac.ru>.

² In 2020, four rounds of the monitoring were conducted. Surveys in April and June 2020 were not conducted due to quarantine restrictions during the spread of COVID-19.

How would you assess the current work of...? (% of respondents)

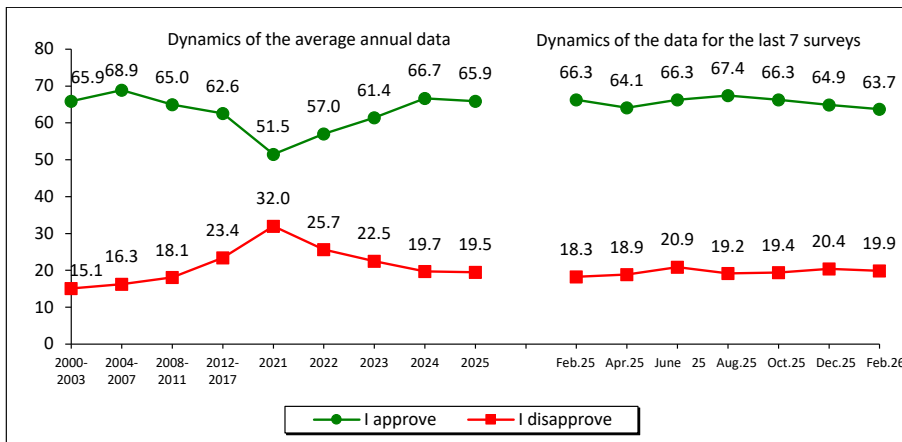
Response	Dynamics of the average annual data										Dynamics of the data for the last 7 surveys							Dynamics (+/-), Feb. 2026 to	
	2000	2007	2012	2018	2021	2022	2023	2024	2025	Feb. 2025	Apr. 2025	June 2025	Aug. 2025	Oct. 2025	Dec. 2025	Feb. 2026	Feb. 2025	Dec. 2025	
RF President																			
I approve	66.0	75.3	51.7	66.4	51.5	57.0	61.4	66.7	65.9	66.3	64.1	66.3	67.4	66.3	64.9	63.7	-3	-1	
I disapprove	14.8	11.5	32.6	21.7	32.0	25.7	22.5	19.7	19.5	18.3	18.9	20.9	19.2	19.4	20.4	19.9	+2	-1	
Chairman of the RF Government																			
I approve	-	-	49.6	48.0	39.9	45.4	50.1	54.1	54.4	54.7	53.9	53.0	55.1	55.7	54.0	51.1	-4	-3	
I disapprove	-	-	33.3	31.6	37.6	32.0	27.6	24.8	22.5	23.8	22.3	22.9	20.6	23.1	22.2	21.3	-3	-1	
Governor*																			
I approve	56.1	55.8	41.9	38.4	36.7	40.9	48.1	51.7	42.5	46.8	42.9	39.9	41.0	41.8	42.8	40.2	-7	-3	
I disapprove	19.3	22.2	33.3	37.6	40.5	35.8	30.9	28.4	37.2	31.4	34.6	37.2	39.1	41.3	39.3	39.0	+8	0	

Positive changes are highlighted in green, negative changes are highlighted in red, and no changes – in blue. Due to the fact that the changes of +/- 3 p.p. fall within the limits of sampling error, they are considered insignificant and are marked in blue.

Wording of the question: “How would you assess the current work of ...?”

* October 31, 2023 according to the Presidential Decree, Georgy Yu. Filimonov was appointed acting Governor of the Vologda Region. Following the results of the regional election held on September 6–8, 2024, Filimonov won 62.3% of the vote and became the elected Governor of the Vologda Region.

How would you assess the way that the RF President is handling his job? (% of respondents, VolRC RAS data)*



Response	Dynamics (+/-), Feb. 2026 to	
	Feb. 2025	Dec. 2025
I approve	-3	-1
I disapprove	+2	-1

Positive changes are highlighted in green, negative changes are highlighted in red, and no changes – in blue. Due to the fact that the changes of +/- 3 p.p. fall within the limits of sampling error, they are considered insignificant and are marked in blue.

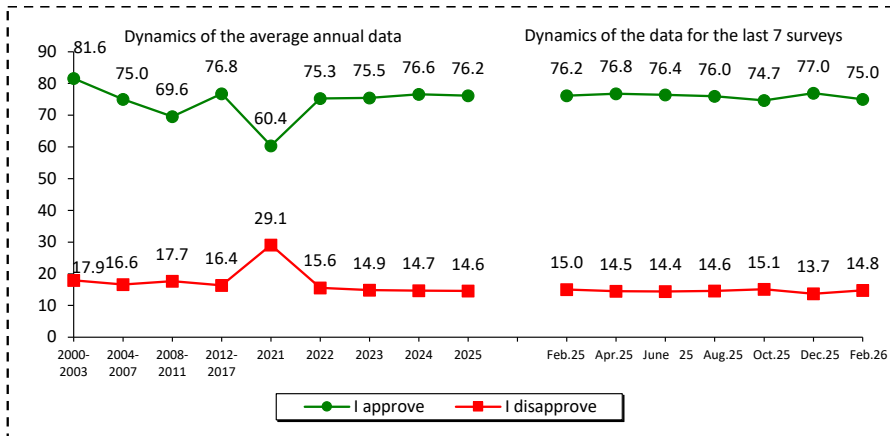
* Here and elsewhere, all graphs show the average annual data for 2000, 2020, 2021, 2022, 2023, 2024, 2025, as well as the average annual data for the periods 2000–2003, 2004–2007, 2008–2011, 2012–2017 that correspond to presidential terms.

For reference:

According to VCIOM, the President’s approval rating for the period from December 2025 to February 2026 was 75–77%. The proportion of negative judgments was 14–15%.

On average, over the past 12 months, the estimates of the general population correspond to the level of support for the activities of the head of state in February 2025.

Do you approve or disapprove of the way that the RF President is handling his job?
(% of respondents; VCIOM data)



Response	Dynamics (+/-), Feb. 2026 to	
	Feb. 2025	Dec. 2025
I approve	-1	-2
I disapprove	0	+1

Wording of the question: "In general, do you approve or disapprove of the way that the Russian President is handling his job?"

Data for February – average for two surveys: as of February 1, 2026 and February 8, 2026.

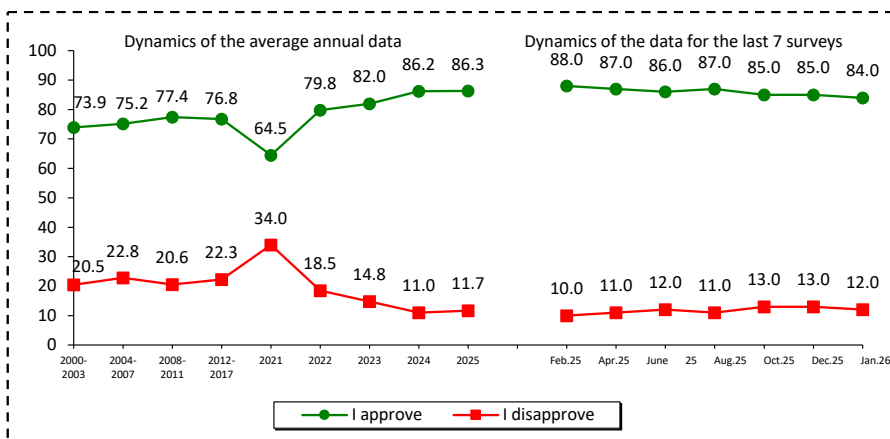
Positive changes are highlighted in green, negative changes are highlighted in red, and no changes – in blue. Due to the fact that the changes of +/- 3 p.p. fall within the limits of sampling error, they are considered insignificant and are marked in blue.

Source: VCIOM. Available at: <https://wciom.ru/>

According to Levada-Center*, the share of positive assessments of the activities of the RF President in December 2025 – January 2026 amounted to 84–85%.

Compared to February 2025, in February 2026, the share of positive assessments decreased by 4 percentage points (from 88 to 84%).

In general, do you approve or disapprove of the way that Vladimir Putin is handling his job as President of Russia? (% of respondents; Levada-Center* data)



Response	Dynamics (+/-), Jan. 2026 to	
	Feb. 2025	Dec. 2025
I approve	-4	-1
I disapprove	+2	-1

Wording of the question: "In general, do you approve or disapprove of the way that Vladimir Putin is handling his job as President of Russia?"

Positive changes are highlighted in green, negative changes are highlighted in red, and no changes – in blue. Due to the fact that the changes of +/- 3 p.p. fall within the limits of sampling error, they are considered insignificant and are marked in blue.

Source: Levada-Center*. Available at: <https://www.levada.ru/>

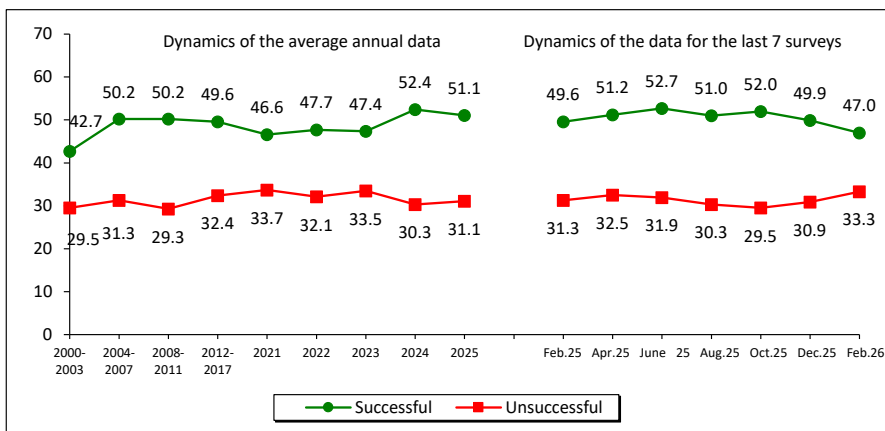
* Included in the register of foreign agents.

In your opinion, how successful is the RF President in handling challenging issues? (% of respondents; VoIRC RAS data)

The share of residents of the region who consider the actions of the President of the Russian Federation to strengthen Russia’s international position to be successful decreased from 50 to 47% in December 2025 – February 2026. The proportion of those who adhere to the opposite point of view increased from 31 to 33%.

Over the past 12 months, the share of positive opinions about the work of the head of state on resolving international issues has decreased slightly (by 3 percentage points, from 50 to 47%).

Strengthening Russia’s international position



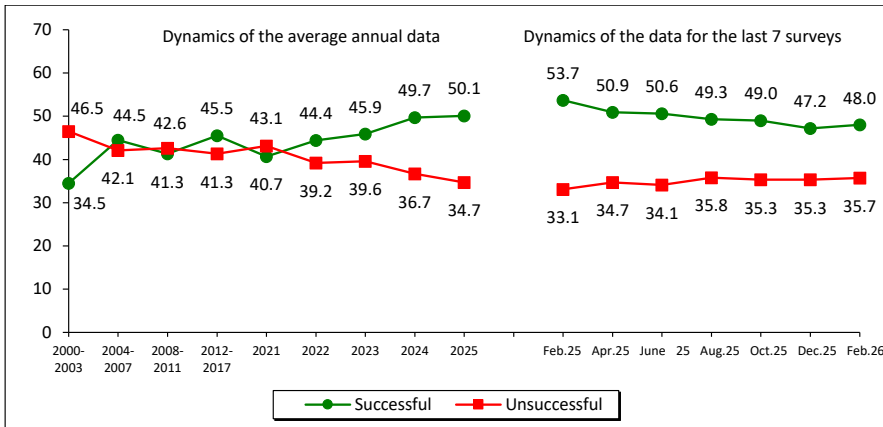
Response	Dynamics (+/-), Feb. 2026 to	
	Feb. 2025	Dec. 2025
Successful	-3	-3
Unsuccessful	+2	+2

Positive changes are highlighted in green, negative changes are highlighted in red, and no changes – in blue. Due to the fact that the changes of +/- 3 p.p. fall within the limits of sampling error, they are considered insignificant and are marked in blue.

Over the past two months, the opinion of the residents of the region about the activities of the head of state to restore order in the country has remained the same: the share of positive judgments was 48%, negative ones – 35–36%.

From February 2025 to February 2026, the proportion of those who believe that the RF President is successfully managing to restore order in the country decreased by 6 percentage points (from 54 to 48%).

Restoring order in the country



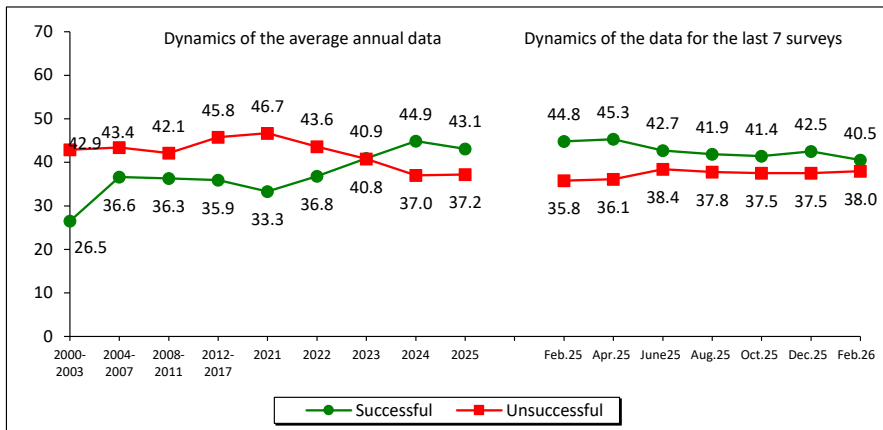
Response	Dynamics (+/-), Feb. 2026 to	
	Feb. 2025	Dec. 2025
Successful	-6	+1
Unsuccessful	+3	0

Positive changes are highlighted in green, negative changes are highlighted in red, and no changes – in blue. Due to the fact that the changes of +/- 3 p.p. fall within the limits of sampling error, they are considered insignificant and are marked in blue.

In February 2026, compared with December 2025, the share of residents of the region who positively assess the activities of the RF President to protect democracy and strengthen citizens’ freedoms decreased slightly (from 43 to 41%).

Negative changes have been observed over the past 12 months. The proportion of those approving of the head of state’s work to protect democracy and strengthen citizens’ freedoms decreased by 4 percentage points (from 45 to 41%).

Protecting democracy and strengthening citizens’ freedoms



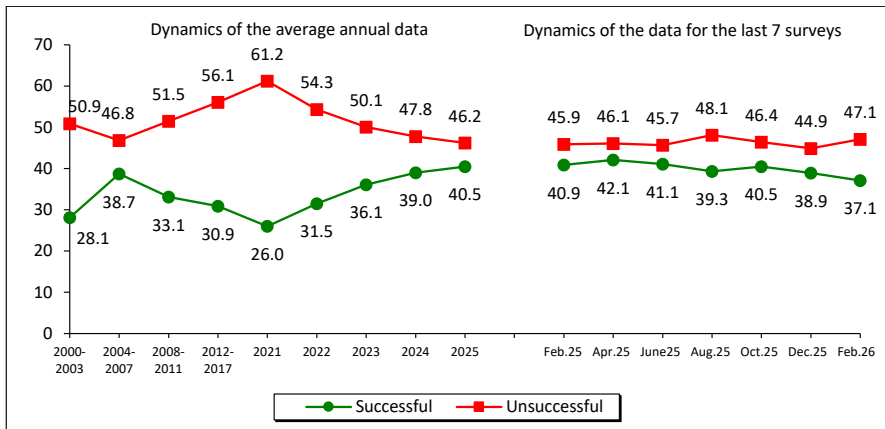
Response	Dynamics (+/-), Feb. 2026 to	
	Feb. 2025	Dec. 2025
Successful	-4	-2
Unsuccessful	+2	+1

Positive changes are highlighted in green, negative changes are highlighted in red, and no changes – in blue. Due to the fact that the changes of +/- 3 p.p. fall within the limits of sampling error, they are considered insignificant and are marked in blue.

The share of positive assessments of the success of the Russian President’s coping with the problem of economic recovery and the growth of citizens’ well-being in December 2025 – February 2026 did not change significantly and amounted to 37–39%.

From December 2025 to February 2026, the proportion of positive opinions regarding the activities of the head of state to solve economic issues decreased (by 4 percentage points, from 41 to 37%).

Economic recovery, increase in citizens’ welfare



Positive changes are highlighted in green, negative changes are highlighted in red, and no changes – in blue. Due to the fact that the changes of +/- 3 p.p. fall within the limits of sampling error, they are considered insignificant and are marked in blue.

The structure of political preferences of the region’s residents remains stable. The majority of respondents (36–38%) support the United Russia party. This is followed by the Communist Party of the Russian Federation (9–10%), the Liberal Democratic Party (9%), the Just Russia Party (3-4%) and the New People (2–3%).

Over the past 12 months, the proportion of people who say that their interests are expressed by the United Russia Party has decreased (by 4 percentage points, from 40 to 36%).

Which party expresses your interests?
(% of respondents; VoIRC RAS data)

Party	Dynamics of the average annual data													Dynamics of the data for the last 7 surveys						Dynamics (+/-), Feb. 2026 to		
	2011	Election to the RF State Duma 2011, fact	2012	2016	Election to the RF State Duma 2016, fact	2018	2020	Election to the RF State Duma 2020, fact	2021	2022	2023	2024	2025	Feb. 2025	Apr. 2025	June 2025	Aug. 2025	Oct. 2025	Dec. 2025	Feb. 2026	Feb. 2025	Dec. 2025
United Russia	31.1	33.4	29.1	35.4	38.0	37.9	31.5	49.8	31.7	35.2	39.5	42.9	40.3	39.9	40.5	41.6	41.2	40.5	38.1	36.1	-4	-2
CPRF	10.3	16.8	10.6	8.3	14.2	9.2	8.4	18.9	9.3	10.1	9.6	8.9	9.6	8.8	8.0	9.1	11.5	10.5	9.7	9.2	0	-1
LDPR	7.8	15.4	7.8	10.4	21.9	9.6	9.5	7.6	9.9	7.3	7.0	7.1	8.2	7.5	7.1	9.4	8.7	7.8	8.6	8.9	+1	0
Just Russia – Patriots for the Truth	5.6	27.2	6.6	4.2	10.8	2.9	4.7	7.5	4.7	4.9	4.4	3.5	3.5	2.3	2.9	3.9	4.2	3.4	4.1	3.1	0	-1
New People*	–	–	–	–	–	–	–	5.3	2.3	1.5	1.9	2.0	2.5	3.1	3.0	2.5	1.8	2.2	2.5	2.4	0	0
Other	1.9	–	2.1	0.3	–	0.7	0.5	–	0.2	0.3	0.1	0.2	0.1	0.3	0.0	0.1	0.1	0.1	0.2	0.2	0	0
None	29.4	–	31.3	29.4	–	28.5	34.2	–	33.9	30.6	26.5	25.2	25.8	28.4	27.7	24.9	23.3	24.3	26.1	29.1	+1	+3
Difficult to answer	13.2	–	11.7	12.0	–	11.2	11.1	–	10.0	10.1	11.1	10.3	10.0	9.7	10.8	8.5	9.2	11.3	10.7	11.0	+1	0

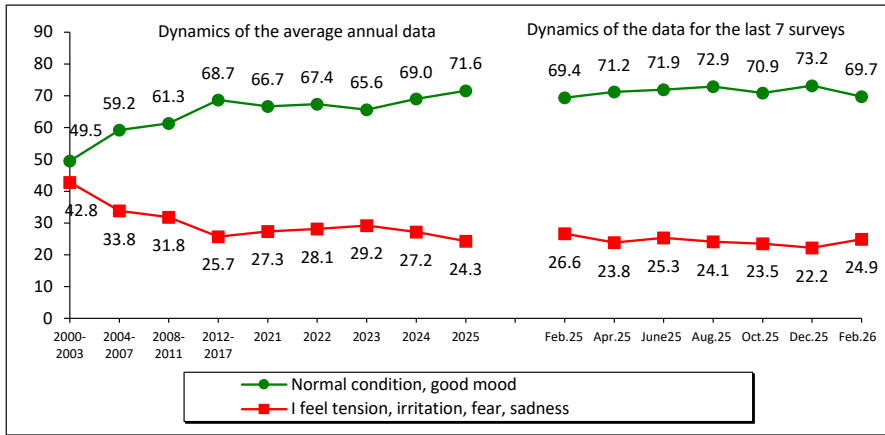
* The New People party was elected to the State Duma of the Russian Federation for the first time following the results of the election held on September 17–19, 2021.
Positive changes are highlighted in green, negative changes are highlighted in red, and no changes – in blue. Due to the fact that the changes of +/- 3 p.p. fall within the limits of sampling error, they are considered insignificant and are marked in blue.

Over the past two months, the proportion of positive assessments of social mood has decreased by 4 percentage points (from 73 to 69%).

Over the past 12 months, the proportion of people who describe their mood as “normal, fine” has not changed and amounted to 69%. The proportion of those who more often experience “tension, irritation, fear, sadness” was 25–27%.

Estimation of social condition (% of respondents; VoIRC RAS data)

Social mood



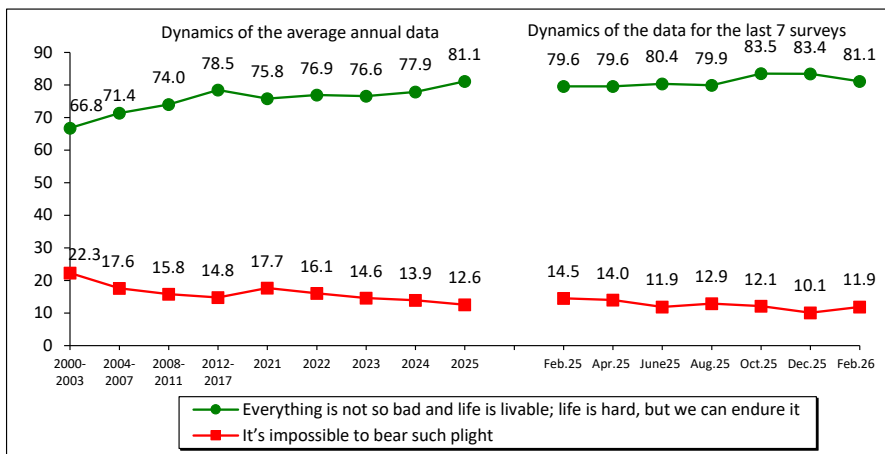
Response	Dynamics (+/-), Feb. 2026 to	
	Feb. 2025	Dec. 2025
Normal condition, good mood	0	-4
I feel tension, irritation, fear, sadness	-2	+3

Positive changes are highlighted in green, negative changes are highlighted in red, and no changes – in blue. Due to the fact that the changes of +/- 3 p.p. fall within the limits of sampling error, they are considered insignificant and are marked in blue.

The reserve of patience remains at a consistently high level: 81–83% of residents of the region in December 2025 – February 2026 noted that “everything is not so bad and life is livable”. The proportion of those who believe that it is “no longer possible” to tolerate their plight was 10–12%.

In February 2026, the index of the reserve of patience remained at the level of February 2025 and amounted to 80–81%.

Reserve of patience



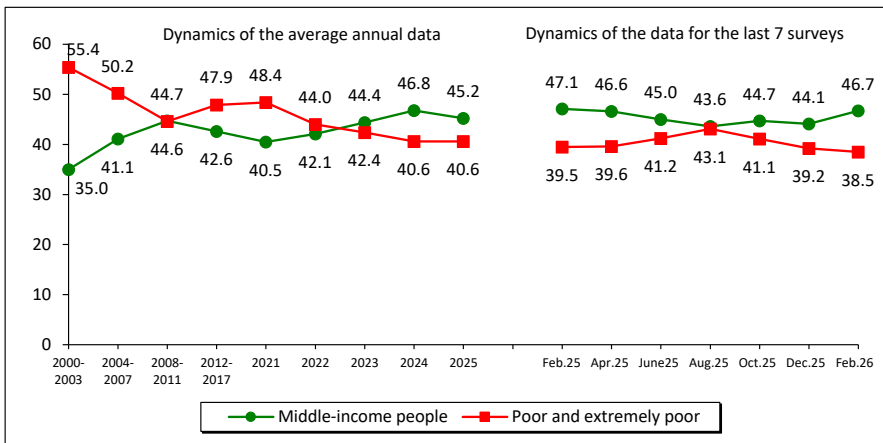
Response	Dynamics (+/-), Feb. 2026 to	
	Feb. 2025	Dec. 2025
Everything is not so bad and life is livable; life is hard, but we can endure it	+2	-2
It's impossible to bear such plight	-3	+2

Positive changes are highlighted in green, negative changes are highlighted in red, and no changes – in blue. Due to the fact that the changes of +/- 3 p.p. fall within the limits of sampling error, they are considered insignificant and are marked in blue.

In February 2026, there was a slight increase in the proportion of respondents identifying themselves as “middle-income” people. Compared to December 2025, this indicator increased by 3 percentage points, reaching 47%.

There have been no significant changes in the social self-identification of the region’s residents in 12 months.

Social self-identification



Response	Dynamics (+/-), Feb. 2026 to	
	Feb. 2025	Dec. 2025
Middle-income people	0	+3
Poor and extremely poor	-1	-1

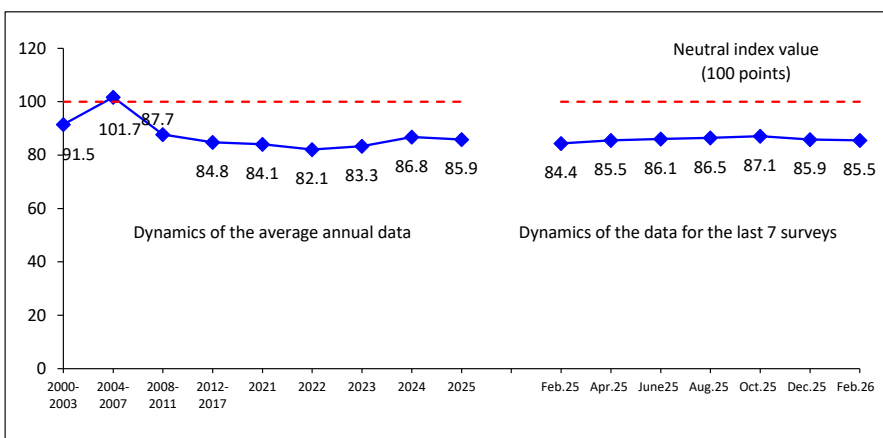
Wording of the question: “What category do you belong to, in your opinion?”.

Positive changes are highlighted in green, negative changes are highlighted in red, and no changes – in blue. Due to the fact that the changes of +/- 3 p.p. fall within the limits of sampling error, they are considered insignificant and are marked in blue.

The Consumer Sentiment Index (CSI) in December 2025 – February 2026 amounted to 86 points.

There were also no significant changes during the measurement year: the CSI was 84–86 points.

Consumer Sentiment Index (CSI, points; VoIRC RAS data for the Vologda Region)



Response	Dynamics (+/-), Feb. 2026 to	
	Feb. 2025	Dec. 2025
Index value, points	+1	0

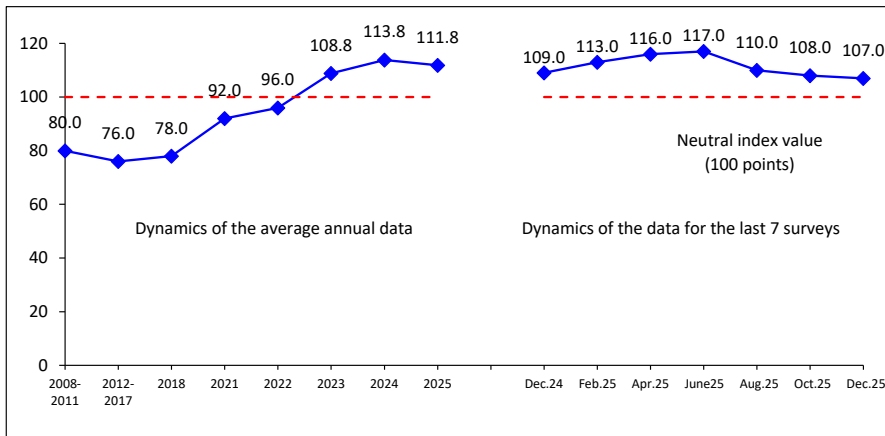
Positive changes are highlighted in green, negative changes are highlighted in red, and no changes – in blue. Due to the fact that the changes of +/- 3 p.p. fall within the limits of sampling error, they are considered insignificant and are marked in blue.

For reference:

According to the latest data from the all-Russian Levada-Center surveys* (for the period from October to December 2025), the Consumer Sentiment Index amounted to 107–108 points.

From December 2024 to December 2025, the CSI has not undergone significant changes. At the same time, there was a negative trend in the second half of 2025: from June to December 2025, the CSI decreased by 10 points (from 117 to 107 points).

Consumer Sentiment Index (CSI, points; Levada-Center* data for Russia³)



Response	Dynamics (+/-), December 2025 to	
	Dec. 2024	Oct. 2025
Index value, points	-2	-1

The index is calculated since 2008.

The latest data – as of December 2025.

Positive changes are highlighted in green, negative changes are highlighted in red, and no changes – in blue. Due to the fact that the changes of +/- 3 p.p. fall within the limits of sampling error, they are considered insignificant and are marked in blue.

Source: Levada-Center*. Available at: <https://www.levada.ru/indikatory/sotsialno-ekonomicheskie-indikatory/>

In the period from December 2025 to February 2026, the negative dynamics of social mood affected half of the socio-demographic groups (7 out of 14). The most noticeable decrease in the share of positive ratings was recorded among respondents under the age of 30 (by 5 percentage points) and those aged 30–55 (by 5 percentage points), as well as among people with secondary education and below (by 5 percentage points). In the remaining 7 groups, the indicator remained unchanged. At the same time, there are no positive developments.

³ Since March 2025, Levada-Center* has updated data on the CSI. The CSI in Russia has been calculated since 1993 on the basis of five questions, similar to the index developed in the 1940s by the Institute for Social Research at the University of Michigan. The individual indices for each question are calculated as the difference between the proportions of positive and negative responses plus 100. The cumulative CSI is the arithmetic mean of individual indices (range 0–200, where >100 is the predominance of positive ratings). In 2009, the CSI was linked to the values of March 2008 (100% base), which was associated with a change in the methodology of surveys and the economic crisis. However, this led to the fact that the index began to reflect changes only relative to 2008. Since March 2025, it was decided to return to the original method of calculating the CSI, abandoning the link to 2008, because in 2023, many indicators exceeded the peaks of 2008 and the old version of the index ceased to adequately reflect the current situation. A return to the original methodology is intended to solve this problem. Source: Updated Consumer Sentiment Index: February 2025 Figures. Available at: <https://www.levada.ru/2025/03/26/obnovlennyj-indeks-potrebitelskhnastroenij-pokazateli-fevralya-2025-goda/>.

* Included in the register of foreign agents.

During the year, an increase in the share of positive assessments of social mood was recorded only in one group – among the 20% of the most affluent: the indicator increased by 10 percentage points (from 78 to 88%).

Social mood deteriorated in three groups:

- ✓ among young people under 30 years of age – a decrease of 10 percentage points (from 80 to 70%);
- ✓ among the 20% of the least affluent – by 8 percentage points (from 56 to 48%);
- ✓ among people with secondary education and below – by 4 percentage points (from 65 to 61%).

In the majority of socio-demographic groups (in 10 out of 14), the indicator of social mood remained unchanged.

Social mood in different social groups (Response “Wonderful mood, normal, stable condition”, % of respondents; VoIRC RAS data)

Population group	Dynamics of the average annual data								Dynamics of the data for the last 7 surveys							Dynamics (+/-), Feb. 2026 to	
	2007	2012	2018	2021	2022	2023	2024	2025	Feb. 2025	Apr. 2025	June 2025	Aug. 2025	Окт. 2025	Dec. 2025	Feb. 2026	Feb. 2025	Dec. 2025
Gender																	
Men	65.9	69.1	72.8	65.7	66.8	65.5	66.5	70.7	70.1	68.8	71.6	72.1	68.2	73.3	69.1	-1	-4
Women	61.7	65.8	69.8	67.4	67.9	65.7	70.9	72.3	68.8	73.1	72.2	73.5	73.1	73.1	70.1	+1	-3
Age																	
Under 30	71.3	72.3	79.9	73.5	77.6	75.0	76.6	76.8	79.9	76.7	76.7	78.1	75.2	74.3	69.5	-10	-5
30–55	64.8	67.9	72.6	69.5	69.4	68.8	71.3	74.3	70.2	74.1	74.1	74.9	73.9	78.4	73.6	+3	-5
Over 55	54.8	62.1	65.2	60.5	61.1	58.2	63.3	66.5	64.6	65.8	67.6	68.6	65.9	66.6	64.9	0	-2
Education																	
Secondary and incomplete secondary	58.4	57.2	64.8	62.1	64.6	62.0	64.6	67.2	64.6	65.6	68.4	70.3	68.4	66.1	60.6	-4	-5
Secondary vocational	64.6	66.7	72.1	66.7	68.3	66.1	70.3	73.6	71.8	74.8	74.1	73.6	71.4	75.6	71.6	0	-4
Higher and incomplete higher	68.6	77.0	76.7	71.5	69.5	68.8	72.3	73.9	71.4	73.4	73.0	74.7	73.1	77.6	74.7	+3	-3
Income group																	
Bottom 20%	51.6	51.5	57.2	54.6	57.0	50.1	53.5	55.2	55.9	56.9	56.1	58.3	53.3	50.7	48.2	-8	-3
Middle 60%	62.9	68.7	72.1	67.3	68.1	67.4	70.7	73.2	70.5	72.6	74.4	73.1	73.1	75.2	72.2	+2	-3
Top 20%	74.9	81.1	82.4	79.9	78.3	73.9	77.6	83.6	77.9	81.3	84.1	83.8	84.8	89.4	87.7	+10	-2
Territory																	
Vologda	63.1	73.6	71.0	60.3	59.8	59.6	66.0	70.2	66.7	68.6	69.5	72.9	71.4	71.9	68.1	+1	-4
Cherepovets	68.1	76.2	75.7	71.0	71.2	68.1	69.8	73.1	69.9	71.5	72.5	75.0	73.2	76.3	73.0	+3	-3
Districts	61.6	59.8	68.6	67.8	69.5	67.7	70.2	71.6	70.7	72.7	73.1	71.6	69.3	72.2	68.7	-2	-4
Region	63.6	67.3	71.2	66.6	67.4	65.6	69.0	71.6	69.4	71.2	71.9	72.9	70.9	73.2	69.7	0	-4
Total number of groups: positive changes / no changes / negative changes															14:	14:	
															1 / 10	0 / 7	
															/ 3	/ 7	
Positive changes are highlighted in green, negative changes are highlighted in red, and no changes – in blue. Due to the fact that the changes of +/- 3 p.p. fall within the limits of sampling error, they are considered insignificant and are marked in blue.																	

RESUME

The latest wave of public opinion monitoring was conducted in January–February 2026 against a backdrop of sustained foreign policy tensions accompanying negotiations on settling the Ukrainian conflict, the ongoing transformation of the global order architecture, and a sharpening public focus on domestic socio-economic issues. Four years into the Special Military Operation, a transition is observed from the mobilization-driven consolidation characteristic of its initial phase to a stage of “reflection.” The population is not merely adapting to current realities but is becoming increasingly demanding of authorities regarding improvements in living standards and quality of life, as well as the resolution of social justice issues.

This shift – from adaptation to crisis conditions toward a demand for enhanced quality of life and governmental accountability in this process – has been captured by monitoring data. On the one hand, approval ratings for the President of the Russian Federation remain consistently high (64–65%), as does the population’s “reservoir of patience” (81–83%). On the other hand, for the first time in a prolonged period (since February 2025), a steady decline in several crucial indicators is observable.

Thus, in February 2026 compared to February 2025, the level of presidential approval remained virtually unchanged (a marginal decrease of 2 percentage points, from 66 to 64%). However, a more pronounced negative trend is evident in assessments of his performance in specific areas:

- ✓ the share of positive assessments of the President’s work in restoring order in the country decreased by 6 p.p. (from 54 to 48%);
- ✓ regarding the protection of democracy – by 4 p.p. (from 37 to 41%);
- ✓ in boosting the economy – by 4 p.p. (from 41 to 37%);
- ✓ in strengthening Russia’s international positions – by 3 p.p. (from 50 to 47%).

While these changes are modest, they are observable across all key areas of the head of state’s activity. Concurrently, approval ratings have also declined for the Prime Minister of the Russian Federation (by 4 p.p., from 55 to 51%), the regional governor (by 7 p.p., from 47 to 40%), and support for the “United Russia” party (by 4 p.p., from 40 to 36%).

A troubling signal is the deterioration of social mood within certain population segments. Over the year, the share of positive assessments of their emotional state among youth under 30 decreased by 10 p.p. (from 80 to 70%), and among the lowest-income quintile (20% least well-off) – by 8 p.p. (from 56 to 48%). Conversely, among the highest-income quintile (20% most well-off) in the region, an increase in positive assessments of social mood was recorded (by 10 p.p., from 78 to 88%), indicating divergent trends and deepening social stratification and inequality.

The Consumer Sentiment Index (CSI) remains at the level of 84–85 points, showing no significant growth. This stagnation reflects subdued consumer activity and the persistence of cautious expectations among the population regarding the future.

Thus, the monitoring results for February 2026 record a slight decline in the proportion of positive assessments of governmental performance at both regional and federal levels. Domestic policy, including the economic agenda and citizens’ material well-being, emerges as the primary risk zone: negative shifts in evaluations of the President’s handling of economic issues and restoring order are accompanied by a worsening of well-being among low-income groups and youth. Signs of accumulating social tension are appearing, although for now, this is restrained by the high reservoir of patience and has not yet formed a sustained trend.

As noted by V. Fedorov, Director General of VCIOM, in December 2025: “The army is fighting, the people watch on TV, through Telegram channels... how our troops overcome the enemy’s resistance, and

worry about something else: about the economy, salaries, jobs, prices, children's education, healthcare..."⁴ According to sociological surveys by the Center for the Study of Political Culture of Russia (CISPKR), Russian society today harbors three main demands:

1. "Just PEACE" (66%) – ending the Special Military Operation as the primary unspoken desire.
2. "Let us breathe" (62%) – a demand to stop rising prices and tariffs.
3. "Give me back my internet" (62%) – a demand for digital normality without an "electronic concentration camp"⁵.

Consequently, the data obtained in the Vologda Region largely aligns with the assessments of Russian experts and underscores the necessity of enhancing public administration effectiveness to maintain positive public sentiment and prevent its further deterioration. This requires strengthening targeted social policies and paying particular attention to people's economic expectations, aligning with the objectives set forth in state social policy and national projects.

Prepared by K.E. Kosygina and I.M. Bakhvalova

⁴ Alfimov V. From paycheck to victory: How Russian society has changed in a year (interview with V. Fedorov, head of VCIOM). Available at: <https://www.kp.ru/daily/27763.3/5191948/?ysclid=mkgituc55z530676123>

⁵ Obukhov S.P., Mikhalchuk A.M., Bogachev A.M., Strelkov D.A., Khamadieva T.V., Chervontsev A.V. Results of 2025 from V.V. Putin. An Express Analysis of the Message to Russian Society and Foreign Opponents. Available at: <https://kprf.ru/politindx/239901.html?ysclid=mlhmrkgapk916136109>